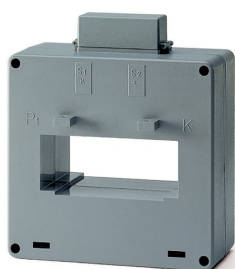


PRODUCT-DETAILS

CT8/800

CT8/800 Current transformer



General Information

Extended Product Type	CT8/800
Product ID	2CSG521180R1101
EAN	8012542607007
Catalog Description	CT8/800 Current transformer
Long Description	CT8/800 is used to transform primary currents to \dots 5A secondary currents for c.a. measurement instruments

Ordering

EAN	8012542607007
Minimum Order Quantity	1 piece
Customs Tariff Number	85043121

Dimensions

Product Net Width	125 mm
Product Net Height	26.5 mm
Product Net Depth / Length	61.5 mm
Product Net Weight	0.500 kg

Container Information

Package Level 1 Units	1 piece
Package Level 1 Width	0.142 m
Package Level 1 Height	0.063 m
Package Level 1 Depth / Length	0.125 m
Package Level 1 Gross Weight	1 kg
Package Level 1 EAN	8012542607007
Package Level 2 Units	1 piece
Package Level 2 Gross Weight	0.500 kg

Environmental

Ambient Air Temperature	Operation -5 ... +50 °C
RoHS Status	Following EU Directive 2002/95/EC August 18, 2005 and amendment

Additional Information

Accuracy	±0.5%
Cable Cross-Section	2 x 30 mm
Cable Use	Cable and Horizontal bar
Current Limit Function	FS 5
Degree of Protection	IP30
Frequency (f)	50 ... 60 Hz
Mounting Type	Through primary
Product Main Type	CT
Product Name	Current transformer
Rated Cross-Section	80 x 30 mm
RoHS Date	31/03/2006 0.00.00
Secondary Output Connection	Plug-in connection

Certificates and Declarations (Document Number)

Data Sheet, Technical Information	9AKK107046A0430
Declaration of Conformity - CE	9AKK106713A5700
Environmental Information	See RoHS Information
Instructions and Manuals	on the product body
RoHS Information	2CSC445004K0201

Classifications

ETIM 4

EC002048 - Current transformer

ETIM 5	EC002048 - Current transformer
ETIM 6	EC002048 - Current transformer
ETIM 7	EC002048 - Current transformer
Object Classification Code	T
WEEE Category	5. Small Equipment (No External Dimension More Than 50 cm)

Categories

Low Voltage Products and Systems → Modular DIN Rail Products → Energy Efficiency Devices → Current Transformers

